

# LUBRICATION FOR FIXED-WING SHAFTS



After a period of use, the wing friction with the shaft leads to the stiffening of the wing. When the wing rotates, the arm vibrates strongly.

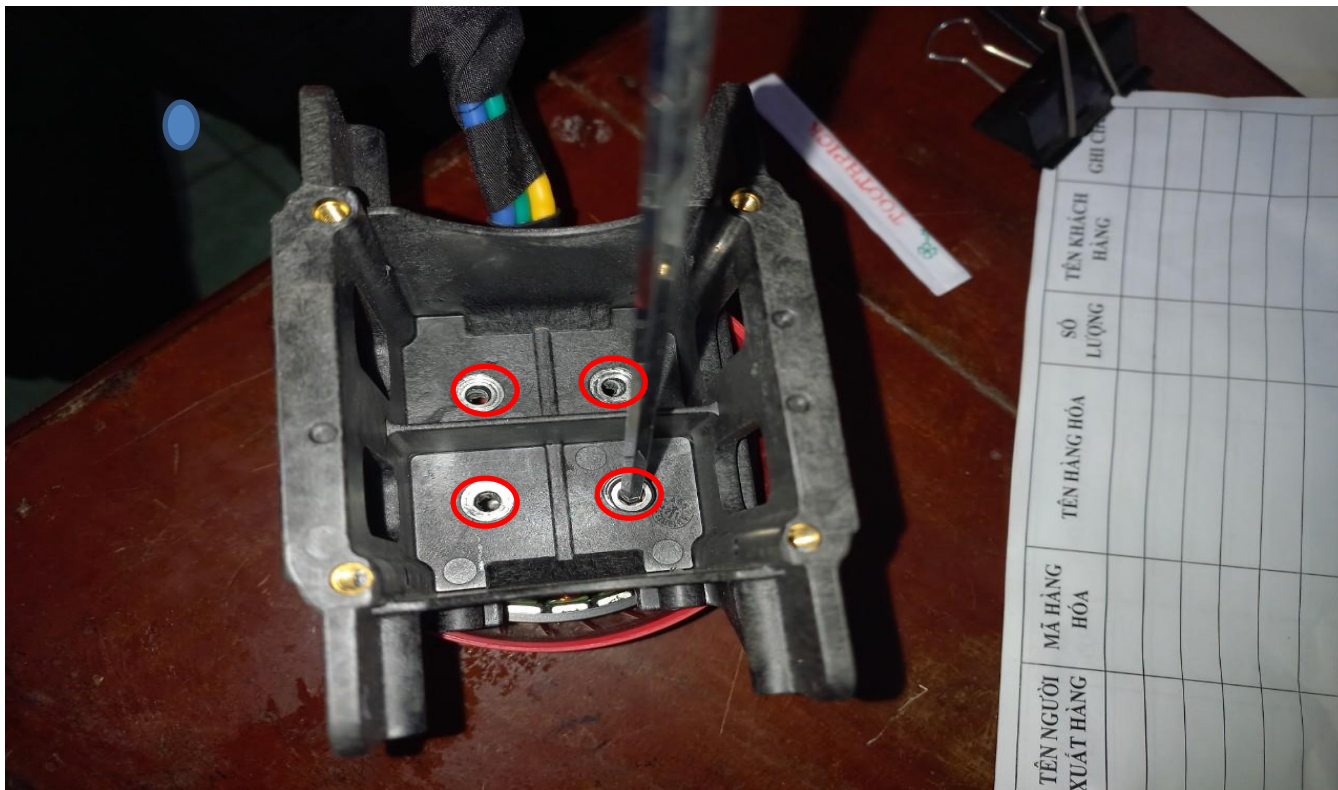
Use spray lubricating oil e.g. WD-40 to maintain shafts and fins.

After lubricating the wing shaft, we tighten the two wings evenly to avoid dislocation of the wing feathers. Ensure the stiffness of the wings as new.

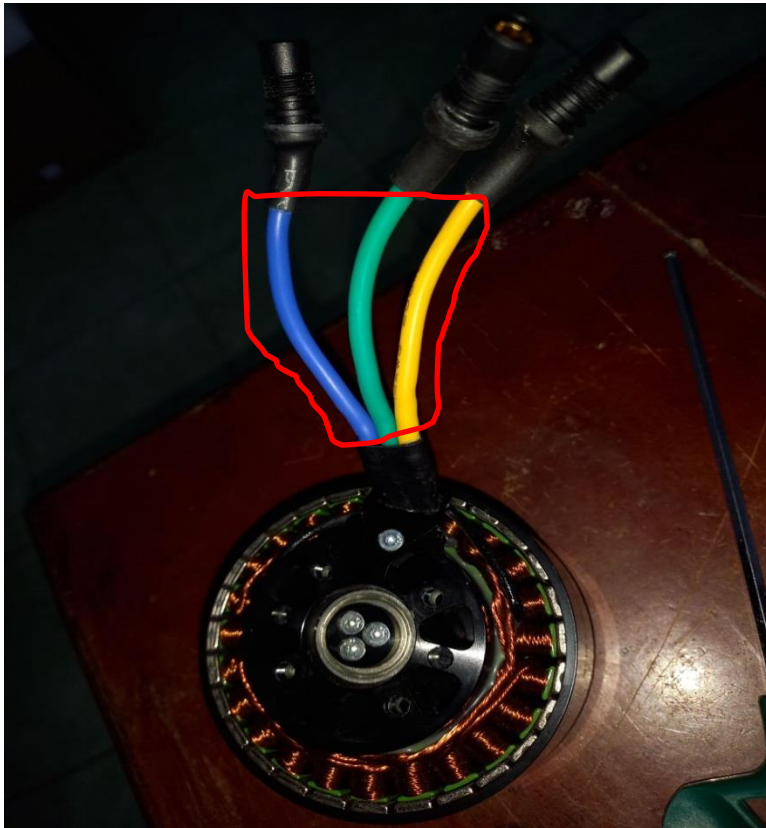
# CHECK THE MOTOR SOCKET

For new machines, check the motor base screws to see if there is any glue, if not, apply glue to the screws to tighten the screws to the base.

Regularly check the motor base screws. This screw position is easy to loosen after 1 time of operation, if not tightened, the motor may be detached.



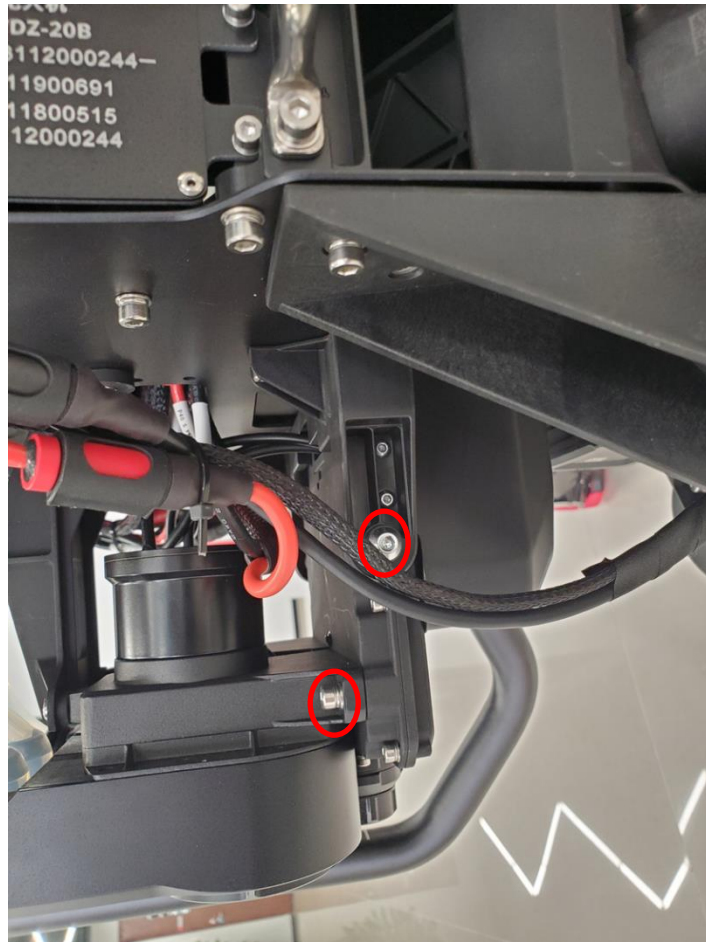
# TEST THE MOTOR'S 3-PHASE POWER WIRE



We use cloth tape to wrap around the 3 power wires of the motor and the connector.

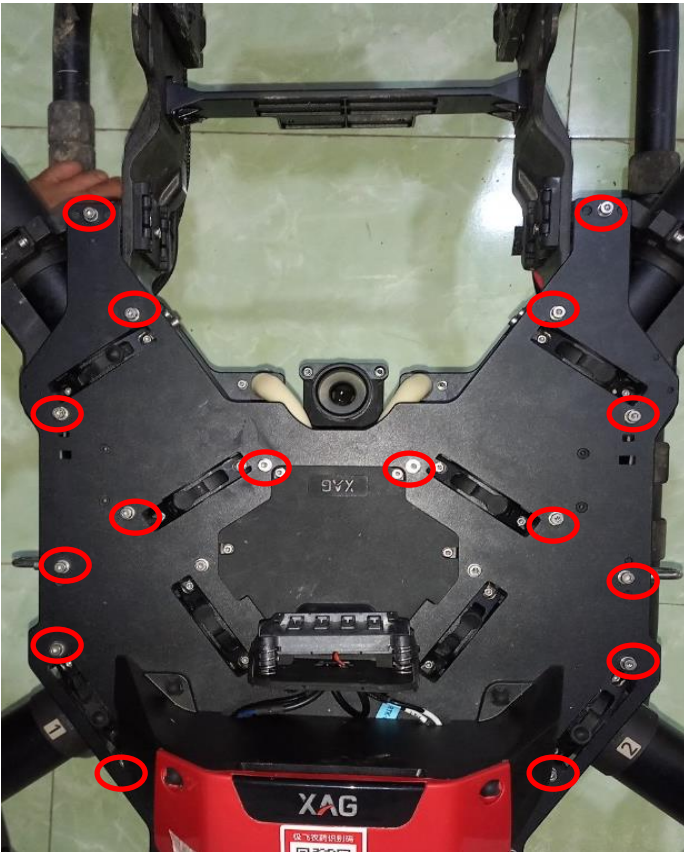
Avoid the case of broken wires touching each other, leading to motor and ESC damage

# INSPECTION OF INJECTOR SYSTEM CREWS



When transporting, the machine will be shaken vigorously to the screw. So we have to check this location.

# CHECK FRAME SNAILS



Periodically check the rib screws to avoid loose screws during operation, leading to the aircraft shaking.

# MAINTENANCE OF PUMP



Apply vaseline for the position of the peristaltic pump in the pump after about 60 ha for rice.

If the grease is not periodically lubricated, the peristaltic pump will crack and must be replaced.